

CERTIFICATE OF LOCATION OF GOVERNMENT CORNER

SOUTH 1/4 Corner of Section 14, Township 106, Range 43, 5TH P.M.

STATE OF MINNESOTA, County of MURRAY

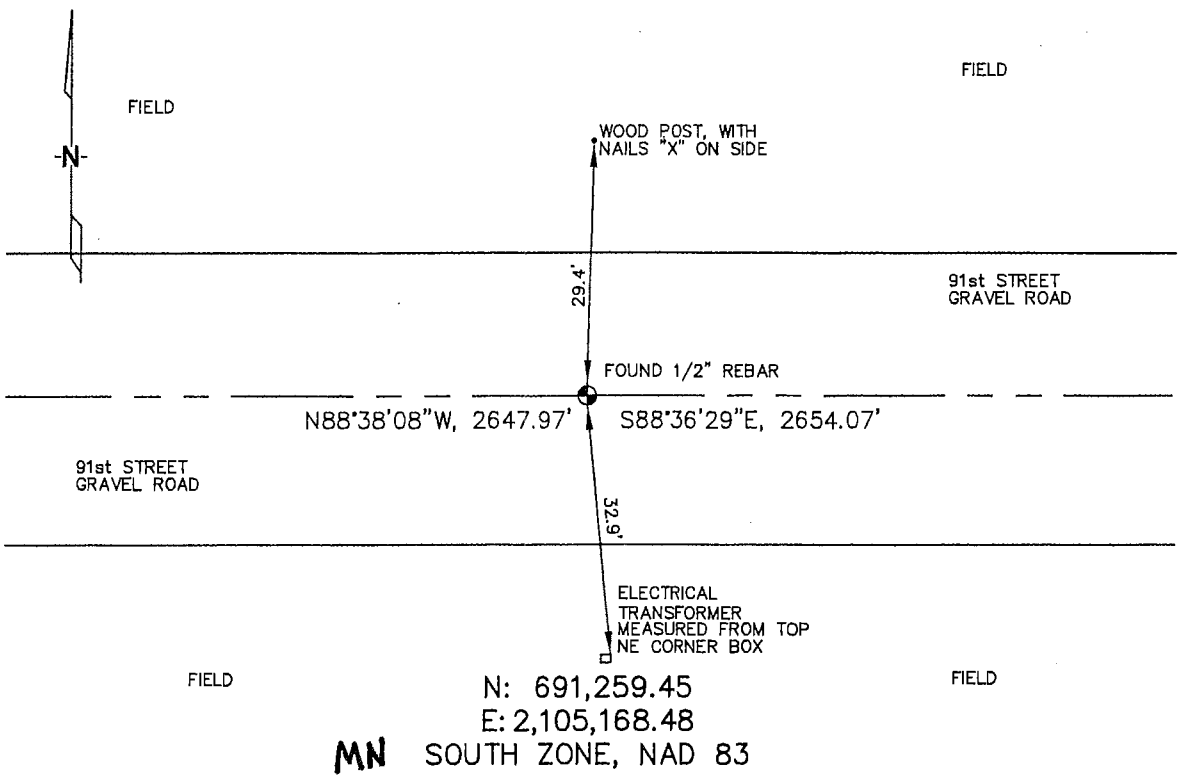
At the corner location shown on the sketch :

On 3/22/2006 found 1/2" REBAR IN GRAVEL ROAD.

left monument as found, lowered monument, removed monument (explain)

On _____ set _____

Sketch of reference ties



Statement of evidence relative to this corner location is on back page

I hereby certify that this document and the data contained herein was prepared by me or under my direct supervision.

Thomas V. Zeff Signature 4/24/06 Date

Registration No. 44563

- Land Surveyor, Professional Engineer
- County Surveyor, County Engineer

OFFICE OF THE COUNTY RECORDER
County of _____

SEP 28 2006

I hereby certify that this document was filed in the Co. Recorders office at _____ .M. on the day of _____ A.D., 20

County Recorder James V. Johnson
By _____, Deputy

DOCUMENT NO. _____

STATEMENT OF EVIDENCE:

SOUTH 1/4 CORNER, SECTION 14, T. 106 N., R. 43 W.,
MURRAY COUNTY, MINNESOTA

1864 J.W. BISHOP, US. DEPUTY SURVEYOR, MONUMENTED CORNER.

3/22/2006 WATEIG ENGINEERS, INC. SURVEY CREW, BRIAN PAYNE
PARTY CHIEF FOUND A 1/2" REBAR IN GRAVEL ROAD.

TIES: N - 29.4' TO WOOD POST W/ NAILED "X" ON SIDE.

S - 32.9' TO NE, TOP, CORNER OF ELECTRICAL
TRANSFORMER BOX.

E - 2654.07' TO SE CORNER, SEC. 14.

W - 2647.97' TO SW CORNER, SEC. 14.